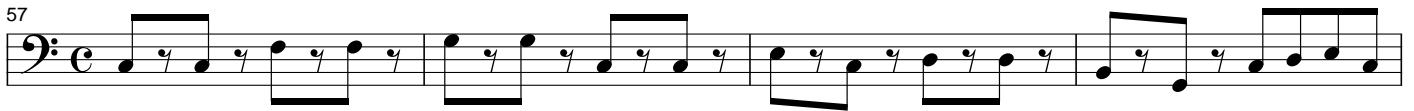




### 3. Country Gardens



### 4. All through the Night



### 5. Shaker Song



## 6. The Floral Dance

102

109

115

1.

2.

Detailed description: This block contains the musical notation for measures 102 through 115 of 'The Floral Dance'. It consists of three staves of music in bass clef. The first staff (measures 102-108) shows a rhythmic pattern of eighth and sixteenth notes. The second staff (measures 109-114) features a first ending bracket over measures 109-113 and a second ending bracket over measures 114-115. The third staff (measures 115-115) concludes the piece with a double bar line.

## 7. Rule Britannia

118

126

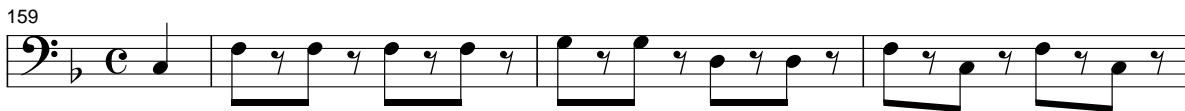
132

138

144

Detailed description: This block contains the musical notation for measures 118 through 144 of 'Rule Britannia'. It consists of five staves of music in bass clef. The first staff (measures 118-125) shows a melodic line with some rests. The second staff (measures 126-131) continues the melody with eighth and sixteenth notes. The third staff (measures 132-137) features a more active melodic line. The fourth staff (measures 138-143) includes a first ending bracket over measures 138-143. The fifth staff (measures 144-144) concludes the piece with a double bar line.

### 8. Over the Sea to Skye



### 9. Loch Lomond



### 10. Annie Laurie

